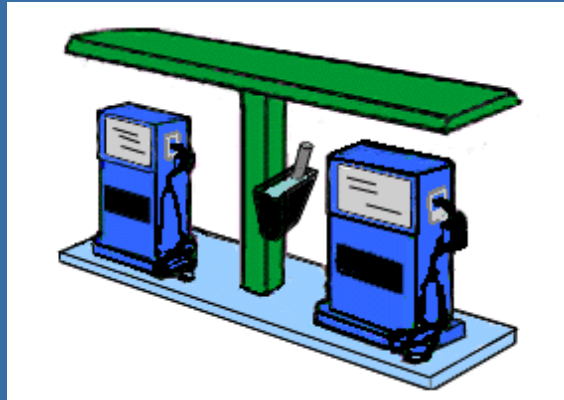


Are You Scanning Yet?

PRI*SCAN

MODULAR BACK-OFFICE SOFTWARE



DESIGNED FOR C-STORES WITH GAS CONTROLLERS

PRESENTED BY:

THE SCAN GROUP

1-888-304-4870

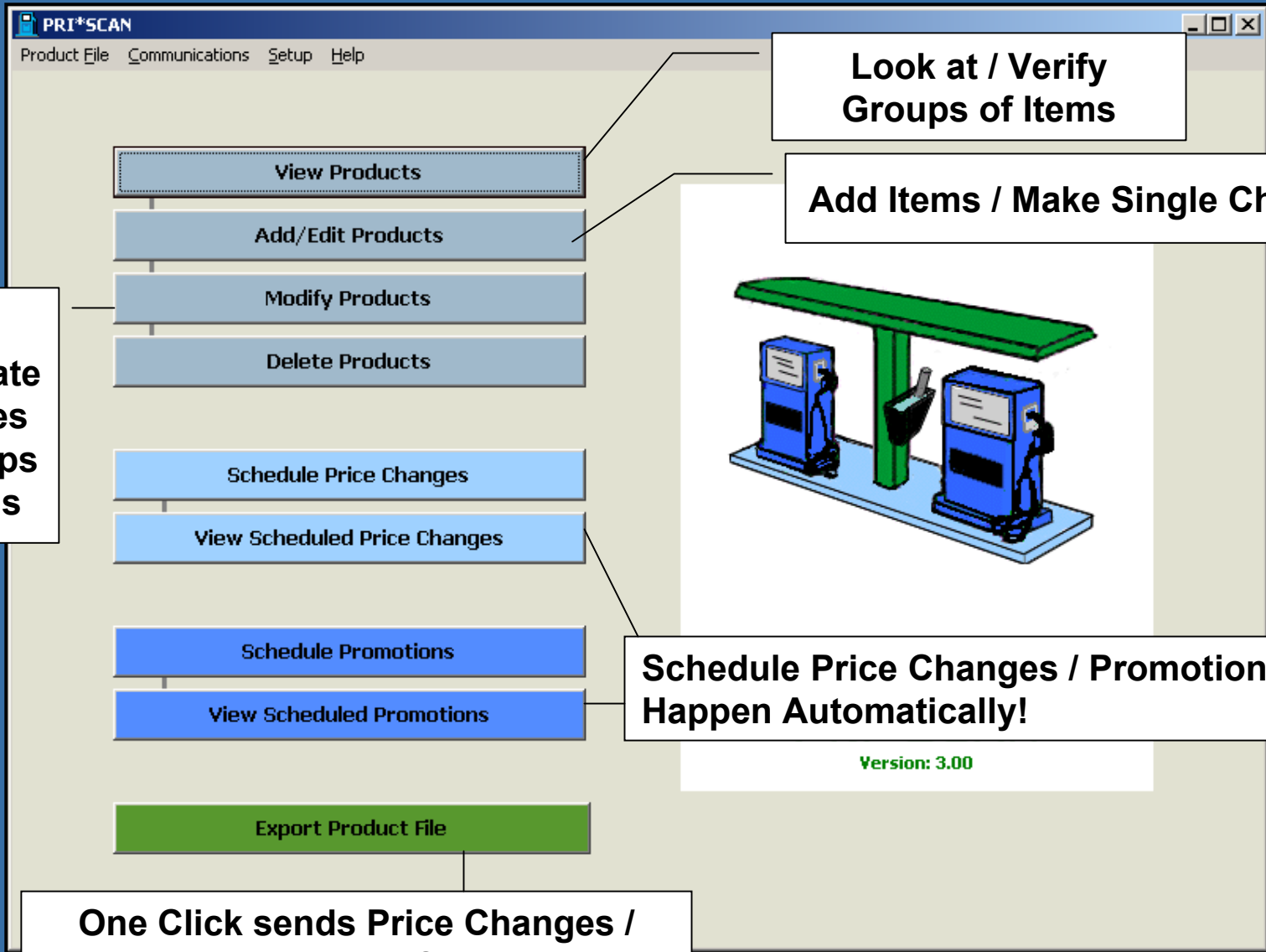
www.thescangroup.com

PRICEBOOK MANAGEMENT MODULE

(PRICEBOOK MANAGEMENT MADE EASY!)

Key Functionality:

- Ensure Accurate Pricing at the Register!
- Easily Add Products, Change Prices, Schedule Promotions!
 - Access all the **PRICEBOOK** functionality right from the Main Screen!



**Look at / Verify
Groups of Items**

Add Items / Make Single Changes

**Make
Immediate
Changes
to Groups
of Items**

**Schedule Price Changes / Promotions to
Happen Automatically!**

**One Click sends Price Changes /
New Items to the Controller!**

**Need to add a new item into the system
(so it can be scanned at the Gas Controller) ?**

JUST CLICK ON ADD/EDIT PRODUCTS!



(and enter the information on ONE easy-to-use screen!)

Add/Edit Products

Options

Site: 001 Mod: 1

Item Number: 049000032581

Item Name: DIET VANILLA COKE CAN

POS Description: DIET VANIL

Department: Carbonated - 16

Wholesale: 0.345

Margin: 0.4692

Retail: 0.65

Vendor ID: BC BEV

Vendor Part No:

Category 1: COKE

Brand: {Blank}

Size: SINGLE

Active: 4 PK
6 PK
CANDY KING
CANDY REG
CARTON
PACK
SINGLE
SPECIAL

Deposit:

Food Stamps:

Duplicate New Save Close

Fill in these few fields, Export to the Gas Controller, and your New Item is Scanning!

Custom Categories let you choose the best way to group your items!

Drop Lists make assigning Department / Vendor / Categories a snap!

**Just noticed your 20oz Cokes are
Scanning at the *Wrong Price*?!**

No Problem!

JUST CLICK ON MODIFY PRODUCTS!



Modify Products

(and change them all at once!)

Item Selection
✕

Selection Criteria - Modify Products

- Site Number
- Item Number
- Item Modifier
- Item Name
- Department
- WholeSale
- Retail
- Vendor ID
- Vendor Part
- Category 1
- Brand
- Size
- Active

- Deposit
- Food stamps

Equal To
COKE

Equal To
20 OZ

Quick Select
COKE 20oz

Save As
Update
Delete
Rename

C

New values (What information to change)

- Department
- Wholesale
- Retail
- Vendor ID
- Category 1
- Brand
- Size
- Active

- Deposit
- Food stamps

Equal To
1.19

Use Categories to pull up your 20oz Cokes!

Selections can be Saved as "Quick selects" to allow you to pull up groups even faster!

Enter the new price

View the group and exclude any items you *don't* want to change

Export to the Controller...Problem Solved!

**Want to see for yourself that those
20oz cokes were changed to \$ 1.19?**

JUST CLICK ON VIEW PRODUCTS!



(and select the 20oz Cokes!)

Products

Options

View Products [36]

Site	Item Number	Mod	Description	Dept	Wholesale	Margin %	Retail	Vendor ID	Vendor Part
001	025000001901	1	FRUITOPIA CITRUS EXCRSION	17	0.717	39.7500	1.19	BC BEV	001901
			FRUITOPIA BEACHSIDE BLAST	17	0.717	39.7500	1.19	BC BEV	001925
			FRUITOPIA KIWI	17	0.698	41.3400	1.19	BC BEV	001956
			FRUITOPIA INTEATION	17	0.717	39.7500	1.19	BC BEV	007941
			FRUITOPIA TANG W	17	0.717	39.7500	1.19	BC BEV	007958
001	025000007965	1	FRUITOPIA GRAPE	17	0.717	39.7500	1.19	BC BEV	007965
001	025000007972	1	FRUITOPIA STRAWBERRY	17	0.717	39.7500	1.19	BC BEV	007972
001	025000058011	1	MINUTE MAID LEMONADE	17	0.769	35.3800	1.19	BC BEV	058011
001	025000058028	1	MINUTE MAID FRUIT PUNCH	17	0.769	35.3800	1.19	BC BEV	058028
001	049000000443	1	COKE CLASSIC 20 OZ	16	0.698	41.3400	1.19	BC BEV	000443
001	049000000450	1	DIET COKE 20 OZ	16	0.698	41.3400	1.19	BC BEV	000450
001	049000000467	1	COKE CAFF FR 20 OZ	16	0.698	41.3400	1.19	BC BEV	000467
001	049000003697	1	POWERADE LEMLIME 20 OZ	17	0.781	34.3700	1.19	BC BEV	003697
001	049000003710	1	POWERADE FRUIT PUNCH 20 OZ	17	0.781	34.3700	1.19	BC BEV	003710
001	049000006223	1	POWERADE INFARED FREEZE 20 OZ	17	0.781	34.3700	1.19	BC BEV	006223
001	049000007640	1	SPRITE 20 OZ	16	0.698	41.3400	1.19	BC BEV	007640
001	049000007909	1	POWERADE MOUNTAIN BLAST 20 OZ	17	0.781	34.3700	1.19	BC BEV	007909
001	049000008388	1	DIET SPRITE						008388
001	049000008937	1	POWERADE G						008937
001	049000009774	1	DASANI 20 OZ						009774

View Products

Back

You can print a list showing just the fields you want to see!

View Products lets you view selected items and edit them right from the grid (just double click on any item to make changes!)

**Are your Winston Packs going to be on a
Buy-Down?**

**JUST CLICK ON
SCHEDULE PROMOTIONS!**

[Schedule Promotions](#)

(and schedule them all at once!)

Item Selection

Selection Criteria - Schedule Promotions

Site Number
 Deposit

Item Number
 Food stamps

Item Modifier

Item Name

Department
 Equal To -

WholeSale

Retail

Vendor ID

Vendor Part

Category 1

Brand
 Equal To

Size
 Equal To

Active
 True

Quick Select

New Promotion Values

Effective Date
 Equal To

End Date
 Equal To

Wholesale
 Equal To

Retail
 Amount Off

Name:

Schedule Promotions in advance—the changes happen automatically!

Has the Buy-Down period been extended? — Just change the end date!

Select the Group

Set the Start and End Dates of the Buy-Down

Change Wholesale and/or Retail!

Wondering how all the Items get into your **PRICEBOOK** in the first place?

VIA OUR SIMPLE SCAN VERIFY PROCESS!

- We contact your major Grocery Supplier, get a file of the items you purchase from them, and combine that with our Generic Database (over 180,000 items including Beer, Chips, Carbonated Beverages etc.)
- We load that file onto a HandHeld PC with an attached scanner & ship it to you—you scan ONE of EACH item in your store and be sure the Retail Price is accurate (or simply add the item if it's not on file.)
- We pull out of the HandHeld JUST those items you scanned and create your **CUSTOM PRICEBOOK!** (Using your departments!)

SALES MANAGEMENT MODULE

(SALES ANALYSIS MADE EASY!)

Key Functionality:

- Easily view Sales Data for select groups of items!
 - Print any reports—even export to Excel!
- View any Date Range you want...one day, four days, one week, three months...one year!

(From the day you start scanning—forward!)

With Item Sales Reports—see exactly which Items sold...by Department, Vendor, Category ...you choose!

Choose a Date Range

Report Selection

Item Sales Department Sales Fuel Sales Item Movement Custom Report

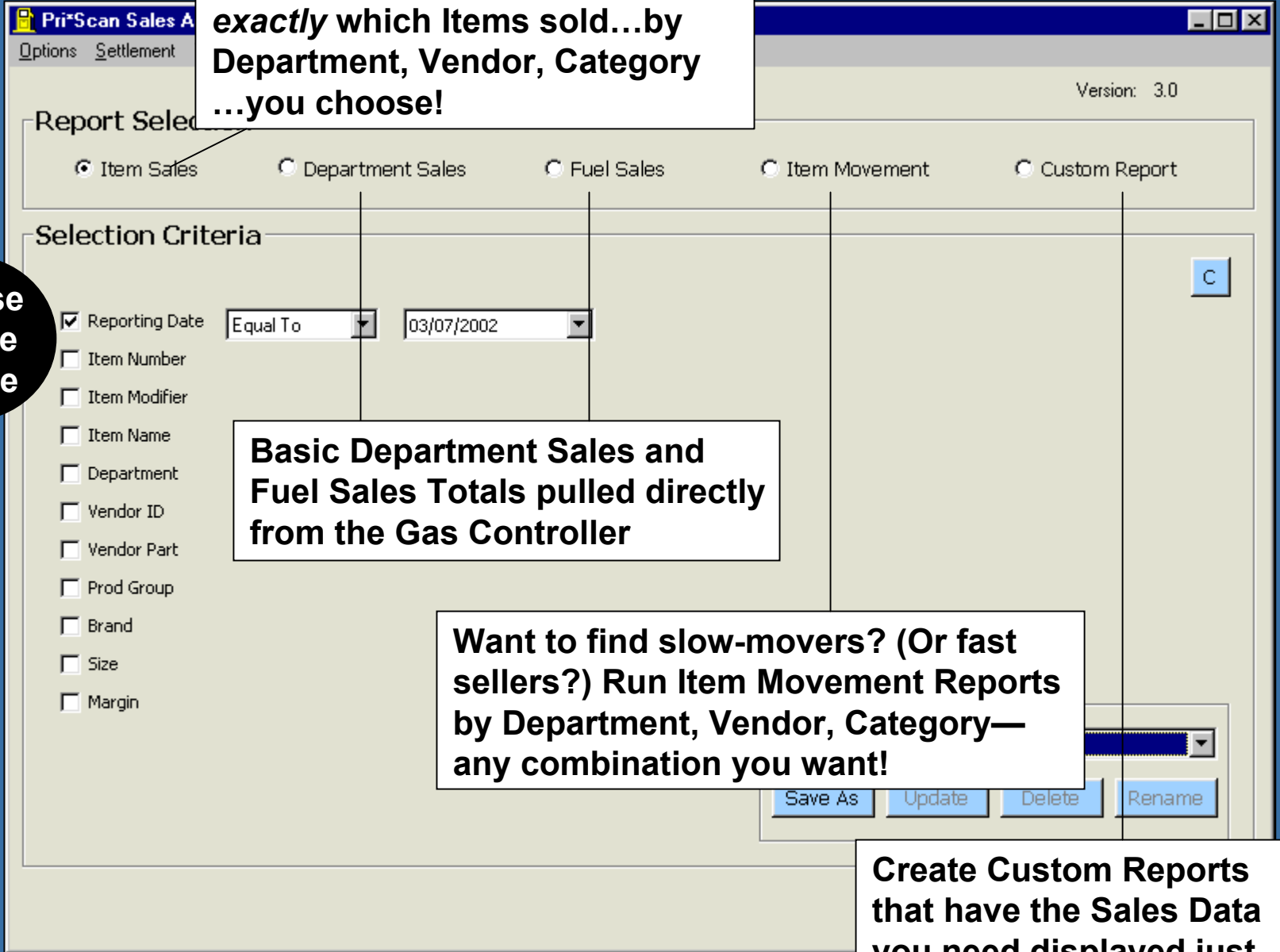
Selection Criteria

- Reporting Date Equal To 03/07/2002
- Item Number
- Item Modifier
- Item Name
- Department
- Vendor ID
- Vendor Part
- Prod Group
- Brand
- Size
- Margin

Basic Department Sales and Fuel Sales Totals pulled directly from the Gas Controller

Want to find slow-movers? (Or fast sellers?) Run Item Movement Reports by Department, Vendor, Category—any combination you want!

Create Custom Reports that have the Sales Data you need displayed just the way you want!





This report shows Item Sales for the selected group (Basic Packs) for the chosen day

Item Sales

March 07, 2002



Item Name	Item Number	Qty Sold	Total Retail	Total Cost	Margin
BASIC FULL FLAVOR 100	1 - 028200006233	1.00	\$2.49	\$2.40	3.61%
BASIC FULL FLAVOR BOX KING	1 - 028200006202	1.00	\$2.49	\$2.40	3.61%
BASIC LIGHT 100	1 - 028200006271	2.00	\$4.98	\$4.81	3.41%
BASIC LIGHT BOX KING	1 - 028200006240	2.00	\$4.98	\$4.81	3.41%
BASIC MENTHOL LIGHT 100	1 - 028200006288	2.00	\$4.98	\$4.81	3.41%
BASIC MENTHOL LIGHT KING	1 - 028200006264	1.00	\$2.49	\$2.40	3.61%
BASIC UL MEN 100	1 - 028200006301	2.00	\$4.98	\$4.81	3.41%

Report Totals

Grand Total Quantity Sold	11.00
Grand Total Retail:	\$27.39
Grand Total Cost:	\$26.44
Net Profit:	\$0.95
Average Margin:	3.47%

The Item Sales Report also gives you Grand Totals of Quantity Sold, Retail, Cost, Net Profit and Average Margin for your selected Items

Department Sales

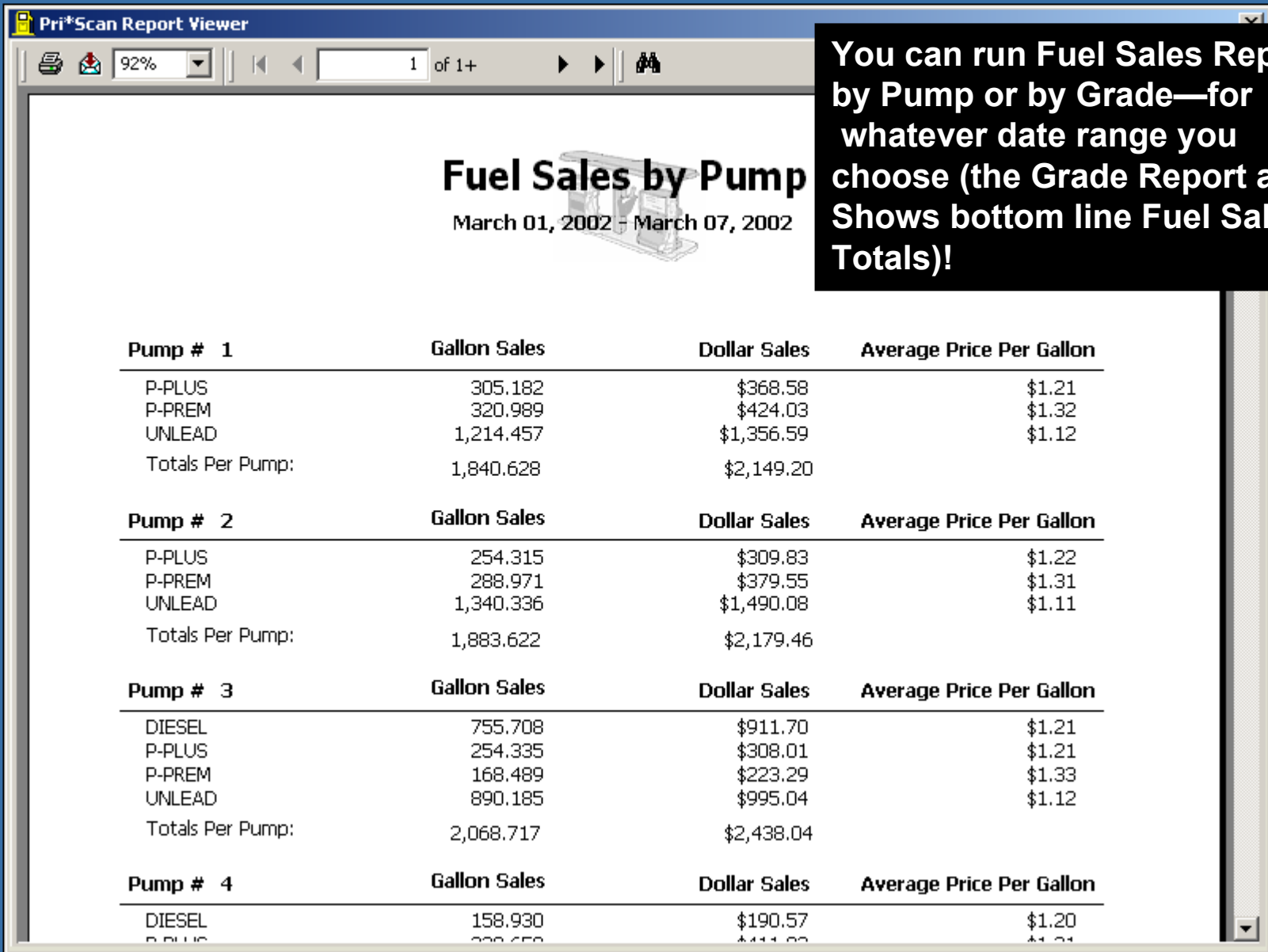
March 07, 2002



Department		Quantity	Retail	Qty Refund	Total Refund
1	Coffee	194.00	\$172.72	0.00	\$0.00
2	Fountain	75.00	\$82.25	0.00	\$0.00
3	TCBY	1.00	\$3.65	0.00	\$0.00
4	Deli	224.00	\$473.43		
5	Groc 6%	18.00	\$25.95		
6	Groc 2%	133.00	\$134.97		
7	MISCTAX	73.00	\$50.34		
8	Promo	5.00	\$42.95		
9	ICE	13.00	\$12.87		
10	NON-TAX	2.00	\$20.00		
11	Cigs	189.00	\$562.18	0.00	\$0.00
12	Tobacco	25.00	\$75.75	0.00	\$0.00
13	Beer	90.00	\$421.72	0.00	\$0.00
14	Wine & Coolers	1.00	\$2.99	0.00	\$0.00
15	Auto	9.00	\$30.57	0.00	\$0.00
16	Carbonated	348.00	\$385.42	0.00	\$0.00
17	Non_ Carb	191.00	\$227.09	0.00	\$0.00
18	Sweet Snacks	118.00	\$98.92	0.00	\$0.00
19	Salty Snacks	130.00	\$108.12	0.00	\$0.00
20	Dairy & Ice Cream	35.00	\$55.85	0.00	\$0.00
21	Candy	207.00	\$167.72	0.00	\$0.00
22	H & B	44.00	\$80.00	0.00	\$0.00
25	Refills	22.00	\$11.38	0.00	\$0.00
Grand Totals:		2,147.00	\$3,246.84	0.00	\$0.00

Basic Department Sales (right from The Gas Controller) The advantage here is—you can choose the date range you want to see! (And keep Historical Data!)

Selection Filter = Date Range: March 07, 2002



You can run Fuel Sales Reports by Pump or by Grade—for whatever date range you choose (the Grade Report also Shows bottom line Fuel Sales Totals)!

Fuel Sales by Pump

March 01, 2002 - March 07, 2002

Pump # 1	Gallon Sales	Dollar Sales	Average Price Per Gallon
P-PLUS	305.182	\$368.58	\$1.21
P-PREM	320.989	\$424.03	\$1.32
UNLEAD	1,214.457	\$1,356.59	\$1.12
Totals Per Pump:	1,840.628	\$2,149.20	
Pump # 2	Gallon Sales	Dollar Sales	Average Price Per Gallon
P-PLUS	254.315	\$309.83	\$1.22
P-PREM	288.971	\$379.55	\$1.31
UNLEAD	1,340.336	\$1,490.08	\$1.11
Totals Per Pump:	1,883.622	\$2,179.46	
Pump # 3	Gallon Sales	Dollar Sales	Average Price Per Gallon
DIESEL	755.708	\$911.70	\$1.21
P-PLUS	254.335	\$308.01	\$1.21
P-PREM	168.489	\$223.29	\$1.33
UNLEAD	890.185	\$995.04	\$1.12
Totals Per Pump:	2,068.717	\$2,438.04	
Pump # 4	Gallon Sales	Dollar Sales	Average Price Per Gallon
DIESEL	158.930	\$190.57	\$1.20
P-PLUS	338.658	\$411.83	\$1.21

Pri*Scan Report Viewer

92% 1 of 1

Item Movement

February 07, 2002 - March 07, 2002

Item Name	Item Number	Department	Retail	Quantity Sold
7-UP 12 PK	1- 078000010800	Carbonated - 16	\$0.00	0.00
DIET PEPSI TWIST 2 LTR	1- 012000007811	Carbonated - 16	\$0.00	0.00
DR PEPPER DIET 12 PK	1- 054900035068	Carbonated - 16	\$0.00	0.00
MOUNTAIN DEW CODE RED 12OZ CAN	1- 012000000621	Carbonated - 16	\$0.00	0.00
MT DEW DT 12 PK	1- 012000001697	Carbonated - 16	\$0.00	0.00
MT DEW DT CAN	1- 012000001666	Carbonated - 16	\$0.00	0.00
MT.DEW CODE RED 12 PK	1- 012000100468	Carbonated - 16	\$0.00	0.00
PEPSI DIET CAFF FREE 12 PK	1- 012000004957	Carbonated - 16	\$0.00	0.00
PEPSI ONE	1- 012000009099	Carbonated - 16	\$0.00	0.00
SCHWEPES GINGERALE 1LTR	1- 016600000265	Carbonated - 16	\$0.00	0.00
SCHWEPES TONIC WATER 1LTR	1- 016600000067	Carbonated - 16	\$0.00	0.00
SCHWEPES				0.00

Selection Filter equal to 'PE' equal to

Use Item Movement to find slow-movers or fast-sellers by Department, Vendor, Categories etc.!

This Item Movement Report shows all Pepsi items that did not sell during the selected month!

Pri*Scan Report Viewer

92% 1 of 1

Department Sales

February 07, 2002 - March 07, 2002

Group Name	Quantity	Retail	Wholesale	Margin
Beer-13	1,202.00	\$5,856.22	\$4,480.08	23.50%
Candy-21	3,692.00	\$3,148.88	\$1,549.01	50.81%
MISCTAX-7	712.00	\$855.36	\$766.61	10.38%
Tobacco-12	713.00	\$2,235.51	\$1,520.04	32.00%
Group Totals	6,319.00	\$12,095.97	\$8,315.74	31.25%

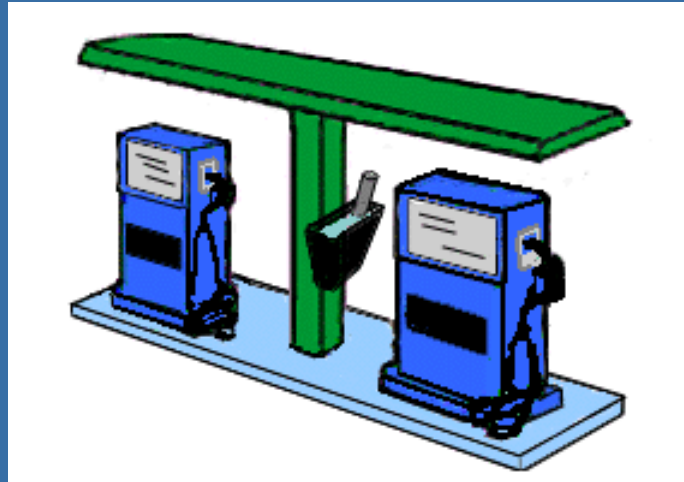
Selection Filter = Date Range: February 07, 2002 - March 07, 2002, Department in: 13, 21, 7, 12

With Custom Reports you can create reports that give you the information you need—displayed just the way you want it!

This is a *Custom Department Sales Report*...

Notice it gives you Retail, Wholesale and Margin for each of the Departments included in the report, with totals at the bottom for all four departments for the month selected.

PRI*SCAN



RECEIVING & INVENTORY MODULES

THE SCAN GROUP

1-888-304-4870

www.thescangroup.com

RECEIVING MODULE

Just got a delivery?

Receive it in a jiffy!

- **Using your HandHeld (A Palm sized PC with a Scanner)
Scan one of each Item and enter the quantity received**
- **Connect the HandHeld to the Back Office Computer—the
Receiving Invoice will be transferred automatically**
 - **Go to Receiving and work with the Invoice!**

Invoice Details

Options

Line Number	Description	Item Number	Mod	Vendor ID	Vendor Part	Current Wholesale	Current Margin	Current Retail
1	COKE CLASSIC 20 OZ	049000000443	1	BC BEV	000443	0.70	0.3596	1.09
2	DIET COKE 20 OZ	049000000450	1	BC BEV	000450	0.70	0.3596	1.09
3	COKE CAFF FR 20 OZ	049000000467	1	BC BEV	000467	0.70	0.3596	1.09
4	COKE CAF FR CL 2LTR	049000002430	1	BC BEV	002430	1.09	0.3145	1.59
5	COKE CAF FR SNG CAN	049000002546	1	BC BEV	002546	0.33	0.5261	0.69
6	COKE 1 LITER	049000005226	1	BC BEV	005226	0.95	0.2636	1.29
7	COKE CLASSIC SNG CAN	049000006346	1	BC BEV	006346	0.33	0.5261	0.69
8	COKE 10 OZ BOTTLE	049000006377	1	BC BEV	006377	0.50	0.3620	0.79
9	COKE 2LTR	049000006391	1	BC BEV	006391	1.09	0.3145	1.59
		049000006582	1	BC BEV	006582	0.33	0.5261	0.69
		049000006636	1	BC BEV	006636	1.09	0.3145	1.59
		049000009354	1	BC BEV	009354	1.09	0.3145	1.59
		049000011340	1	BC BEV	011340	1.09	0.3145	1.59
		049000012590	1	BC BEV	012590	1.09	0.3145	1.59
15	COKE CHERRY 20 OZ	049000018011	1	BC BEV	018011			
16	DIET COKE Lemon SNG CAN	049000028386	1	BC BEV	028386			

Product Lookup

Item Number:

Vendor Part Number:

Did Wholesale change on some of your Items? Just double-click on any line to update Item Information! (details on the next screen)

Manually add any missed Items directly to the invoice using Product Lookup!

Do a quick comparison to your paper invoice to see if Total Wholesale and Total Units match!

Receiving - Product Details

Options

Site: Mod:

Item Number:

Item Name:

POS Description:

Department:

Wholesale:

Margin:

Retail:

Vendor ID:

Vendor Part No:

Category 1:

Brand:

Size:

Active:

Deposit:

Food Stamps:

Did the cost of Coke Classic go up? Enter the new cost here!

Receiving Information

New Wholesale:

New Margin:

New Retail:

Units Received:

Units Invoiced:

Updating information on this screen updates the PRI*SCAN PRICEBOOK!

Then the changes will be sent to the Gas Controller!

Modified:

RECEIVING MODULE

Electronic Invoicing (EDI) available with most Grocery Vendors!

- **The Scan Group will work with your Grocery Vendor to get you set up to receive invoices (usually via email)**
 - **Save your email attachment to your PC**
 - **Invoices are automatically imported into the Receiving Module**
 - **Go to Receiving and work with the Invoice!**

PRI*SCAN Receiving

File Invoices Options

Unprocessed Invoices Processed Invoices All Invoices

Unprocessed Invoices [3]

Site	Vendor ID	Invoice Number	Invoice Date	Total Phys. Units	Total Phys. Wholesale	EI Other Charges	Imported	Processed	Line Count
001	E GROCERS	0000077701	03/29/2005	41	47.01	0.00	03/29/2005 04:25:18 PM	01/01/2000 12:00:00 AM	16
001	FRITO LAY	48771573	03/16/2004	139	131.55	0.00	03/18/2004 01:38:10 PM	01/01/2000 12:00:00 AM	13
001									25

EDI Invoices are received electronically and are automatically imported. This means automatic posting of wholesale cost changes without you having to change a single one!

Electronic Vendor Files [1]

Site	Vendor ID	Invoice Number	Invoice Date	Total EDI Units	Total EDI Wholesale	EI Other Charges	Imported	Processed	Line Count
001	E GROCERS	0000077701	03/27/2005	35	54.10	0.00	03/29/2005 06:10:17 PM	01/01/2000 12:00:00 AM	17

EDI Invoices

You may also choose to scan your invoice and merge it with your EDI file to display discrepancies in quantity.

Color Key: Unprocessed Invoices

Invoice Display
 Matching Invoices All Invoices

Create PRI*SCAN Invoice

Invoice Details

Options

Warning: Margin is Slipping

Invoice Details										
Line Number	Description	Current Wholesale	Current Margin	Current Retail	New Wholesale	New Margin	New Retail	EDI Units Invoiced	Phy. Units Received	
2	TICTAC CINNAMON	0.417	0.4722	0.79	0.520	0.3659	0.82	2	2	
3	WHOPPERS	0.371	0.4623	0.69	0.440	0.3889	0.72	10	9	
4	MILK DUDS KS16	0.650	0.4037	1.09	0.680	0.3874	1.11	1	1	
5	BLICIOUS GONZO GRAPE	0.309	0.5522	0.69	0.370	0.4861	0.72	1	1	
6	CERTS PEPPERMINT	0.371	0.4623	0.69	0.390	0.4583	0.72	2	2	
7	G								1	
8	R								1	
9	P								4	
10	C								1	
11	W								2	
12	M								1	
13	M								1	
14	GLADE CINNAMON STK 9Z	1.140	0.3631	1.79	1.180	0.3516	1.82	1	1	
15	ALTOIDS CITRUS SOUR	1.219	0.3874	1.99	1.270	0.3682	2.01	1	10	
16	CRUNCHMNCNCH TOFFEE 4Z	0.930	0.3758	1.49	0.960	0.3684	1.52	1	1	
17	LIFEFOAM COOLER	1.858	0.4965	3.69	1.890	0.4906	3.71	3	3	

Invoice Details are displayed with your New Wholesale Cost, Margin and Retail pre-filled from your EDI Invoice. A color-key alerts you if Margins are Slipping, Margin is Negative; if New Items are added; and if Unit Count Differs.

Product Lookup

Item Number:

1

Find / Add

Item Search

Vendor Part Number:

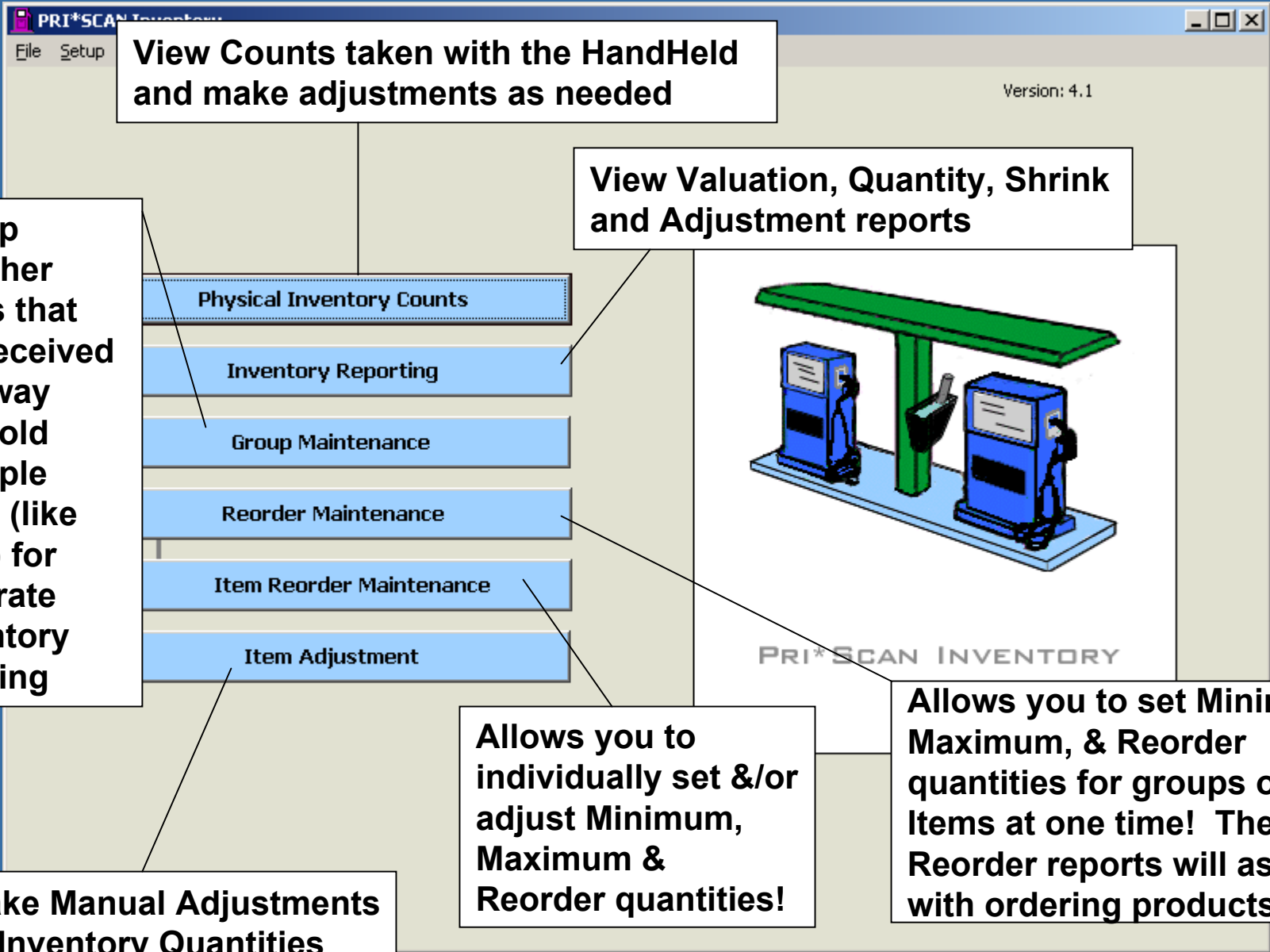
Information

INVENTORY MANAGEMENT MODULE

(INVENTORY CONTROL MADE EASY)

Key Functionality:

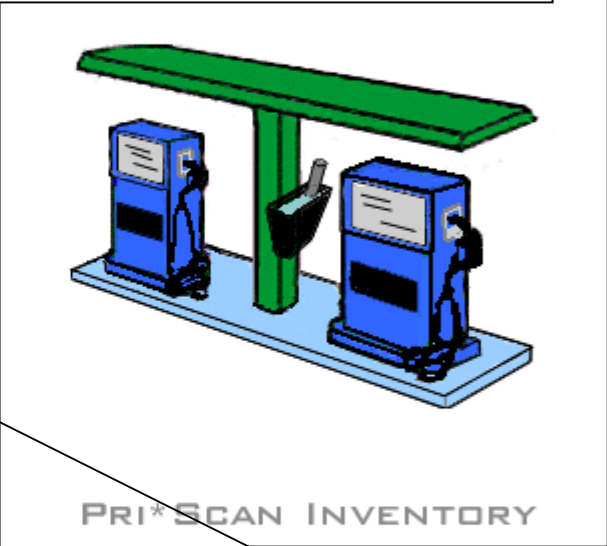
- Take Inventory Counts using the HandHeld and automatically download to the Back-Office Computer!
- Specially designed so you can accurately inventory the whole store or just specific groups of products!
- See Quantity or Dollar-Valuation Reports for any Item or Group of Items!



View Counts taken with the HandHeld and make adjustments as needed

Group together Items that are received one way but sold multiple ways (like Cigs) for accurate inventory tracking

View Valuation, Quantity, Shrink and Adjustment reports



Make Manual Adjustments to Inventory Quantities

Allows you to individually set &/or adjust Minimum, Maximum & Reorder quantities!

Allows you to set Minimum, Maximum, & Reorder quantities for groups of Items at one time! Then Reorder reports will assist with ordering products!

Just had your Staff do an Inventory Count?

Want to check out the results?

**JUST CLICK ON PHYSICAL INVENTORY
COUNTS!**

[Physical Inventory Counts](#)

(and see a Variance Report!)

Items with a Variance between the count taken on the HandHeld and the current count in PRI*SCAN INVENTORY are displayed

Physical Count Details

Physical Count

Description: Coolers

Count Date/Time: 12/20/2002 2:15:00 PM - 12/20/2002 5:15:00 PM

Physical Count Details: [26]

Line Number	Description	Item Number	Mod	Wholesale Total	Retail Total	Physical Unit Count	Perpetual Unit Count	Variance Unit Count
4	PEPSI CAFF FR 20 OZ	012000000706	1	3.80	5.45	5	6	-1
		001567	1	3.80	5.45	6	7	-1
		012000004957	1	16.75	24.95	5	7	-2
27	BUD 24OZ CAN	018200004667	1	4.56	7.45	6	7	-1
31	BUD SINGLE NR	018200004889	1	3.00	6.45	8	9	-1
52	MILLER LT 12OZ	034100003548	2	3.04	6.25	6	8	-2
56	MILLER LN SINGLE	034100005627	1	3.11	6.45	5	7	-2
57	MILLER HIGH LIFE 6PK BTTLES LN	034100015053	1	15.63				
65	MILLER LITE 12PK BTL LONGNECK	034100575090	1	35.85				
67	MILLER LITE 4PK PLASTIC	034100575304	1	14.96				
69	COKE CLASSIC 20 OZ	049000000443	1	3.49	5.45	2	3	-1
71	COKE CAFF FR 20 OZ	049000000467	1	3.49	5.45	5	7	-2
72	COKE CAF FR CLASSIC 2LTR	049000002430	1	5.45	7.95	1	0	1

You can change the Physical Count by double-clicking on the Item

Assigning groups of items to the count helps find items missed during the count or out of stock!

Process the Count to set your On-Hand (Perpetual) Quantities equal to the Physical Count

Wondering what you own in Beer?

**Want to see a “Shrink Report” so you
know just what you lost?**

JUST CLICK ON INVENTORY REPORTING!

[Inventory Reporting](#)

(and get the facts!)

View current dollar valuation for any item or group—or see the value of an Inventory Count taken with Handheld!

See Current On-Hand Quantity, Re-Order or Overstock Reports by item, Department, Vendor or Group

Pri*Sca
Options

Report Selection

Inventory Value Quantity On-Hand Shrink Item History Custom Report

Selection Criteria

Reporting Date Equal To 01/15/2008

Perpetual Inventory

Item Number
 Item Modifier
 Item Name
 Department
 Vendor ID
 Vendor Part
 Category 1
 BRAND
 SIZE

To see exactly which items have had shortages or overages, run a Shrink (Loss) Report for the Items you want to track, over any Date Range

Item History provides a detailed account of sales, receiving and inventory adjustments for a specific item !

Create your own reports broken down by Department, Vendor & / or Category

C

View Close

Inventory Value Report

Pri*Scan Report Viewer

92% 1 of 1

Perpetual Inventory Value

Item Name	Item Number	Quantity	Retail	Wholesale
Carolina Blonde 6pk Bottles	1 - 612620011122	2	\$9.98	\$7.46
ICEHOUSE 6PK CANS	1 - 034100008826	6	\$38.94	\$27.06
ICEHOUSE 6PK NR	1 - 034100625054	4	\$21.16	\$15.30
MILLER GEN DRAFT LN 6PK	1 - 034100175054	4	\$19.96	\$15.30
MILLER HIGH LIFE 6PK BTTLES LN	1 - 034100015053	3	\$11.97	\$9.38
MILLER LITE LN 6PK	1 - 034100575052	2	\$10.58	\$7.65
MILLER LT 6PK	1 - 034100003548	8	\$42.32	\$29.84
MOLSON ICE 6PK NR	1 - 068213091123	3	\$17.67	\$11.99
NEW CASTLE ALE 6PK	1 - 088345100050	0	\$0.00	\$0.00
RICKS SPIKED LEMONADE 6PK	1 - 087000508828	8	\$51.92	\$39.28
SOUTHPAW 6PK	1 - 034100935054	4	\$15.96	\$12.50

Report Totals	
Total Quantity:	44
Total Retail:	\$240.46
Total Cost:	\$175.76
Total Potential Profit:	\$64.70
Margin:	26.91%

1

At any point you can calculate what you own by Department, Vendor, Etc...

**All Reporting is based on close of day yesterday and by date if the date is selected!
(The system pulls DAY Information from the Gas Controller.)**

Quantity On-Hand Report : Re-Order

Pri*Scan Report Viewer

92% 1 of 1

Reorder Quantities

Vendor Part Number is provided to assist with ordering!

Item Name	Item Number	Part Number	On-Hand Quantity	Reorder Quantity	Reorder Cost
AUTO BULB 1157	1 - 080893010140	3010140	0	10	\$5.90
AUTO FUSES	1 - 080893010720	3010720	0	10	\$5.20
CAPRI SCENTS WILDBERRIES	1 - 745323032030	032030	0	10	\$12.00
CASTROL 10W-30 GTX	1 - 079191000922	1000922	2	10	\$17.88
GLASS CLEANER CLOTH	1 - 079542110010	2110010	0	10	\$5.00
HAVOLINE 10W30 TEXACO	1 - 076568002091	8002091	2	10	\$13.67
HOSE CLAMPS	1 - 080893010591	3010591	2	10	\$6.40
ICE SCRAPER	1 - 079976167130	6167130	0	10	\$8.00
KEY LOCK	1 - 792554203012	4203012	2	10	\$27.50
NORTH CAROLINA MAP	1 - 024327034951	034951	2	10	\$24.80
STP FUEL & CARB	1 - 071153005150	3005150	2	10	\$14.20
STP GAS TREATMENT	1 - 071153001312	3001312	2	10	\$10.00
WARREN SAE 30W OIL	1 - 026948130012	8130012	2	10	\$6.57

See what it will cost to Replenish your Stock!

Report Totals	
Total Reorder Quantity:	130
Total Reorder Cost:	\$157.12

Shrink (Loss) Report

You can run Shrink Reports for one Item, or any group, over any Date Range. You can also see Shrink for an Inventory Count just taken!

Pri*Scan Report Viewer
92% | 1 of 1

Shrink Report

April 09, 2004

Item Name	Item Number	Quantity	Retail	Wholesale
COKE 10 OZ BOTTLE	1 - 049000006377	-3	(\$2.37)	(\$1.51)
COKE CAF FR SNG CAN	1 - 049000002546	-1	(\$0.69)	(\$0.33)
COKE CAF FR CLASSIC 2LTR	1 - 049000002430	1	\$1.59	\$1.09
COKE CAFF FR 20 OZ	1 - 049000000467	-2	(\$2.18)	(\$1.40)
COKE CLASSIC 20 OZ	1 - 049000000443	-1	(\$1.09)	(\$0.70)
COKE CLASSIC SNG CAN	1 - 049000006346	-1	(\$0.69)	(\$0.33)
DIET COKE LEMON 12PK	1 - 049000030419	-1	(\$4.99)	(\$3.98)
Diet Coke Lemon 20 OZ	1 - 049000028416	-1	(\$1.09)	(\$0.70)
DIET COKE W/LEMON SINGLE CAN	1 - 049000028386	-1	(\$0.69)	(\$0.33)

Report Totals	
Total Quantity:	-10
Total Retail:	(\$12.20)
Total Cost:	(\$8.17)

Report Totals gives you the bottom line Loss for the items you selected over the date range you chose

Item History Report

View sales, receivings, and manual adjustments by date for a specific item.

Item History

December 01, 2002 - December 24, 2002

Site: 001
Item Name: MT DEW 20 OZ
Item Number 1 - 012000001314

Date	User	Description	Quantity	Running Total
				Beginning Count
				0
12/01/2002	jim	recv - pepsi 0121134	30	30
12/13/2002	ADH	damaged	-1	49
12/15/2002	jim	recv - pepsi 0121145	30	79
12/20/2002	jim	physical variance	-2	77
12/22/2002	sys	sold	-20	57
12/23/2002	sys	sold	-5	52
12/24/2002	sys	sold	-5	47
				Ending Count
				47

If an Inventory Quantity is way off because someone received 300 items instead of 30...you'd see that here!

**Did someone drop a bottle of wine
on the floor?**

**Did you take Windex out of stock
for store use?**

JUST CLICK ON ITEM ADJUSTMENT!

Item Adjustment

(and keep your Inventory accurate!)

Item Maintenance [X]

Site: 001 | Item Number: 013385851334 | Mod: 1

Item Details

Item Name:	BILTMORE WH ZINFANDEL	Current On-hand:	3
Department:	14 - Wine _Coolers	Adjustment Amount:	Decrease By 1
Vendor ID:	ASSOCIATED	Adjustment Type:	Shrink
Vendor Part No.:	851334	Description:	BREAKAGE
Category 1:			
Brand:			
Size:			
Active:	True		

Select the Item by Item Number or search for the Item using Manual Find!

Manually adjust Inventory in cases of Breakage, Donation, Store Usage, etc.!

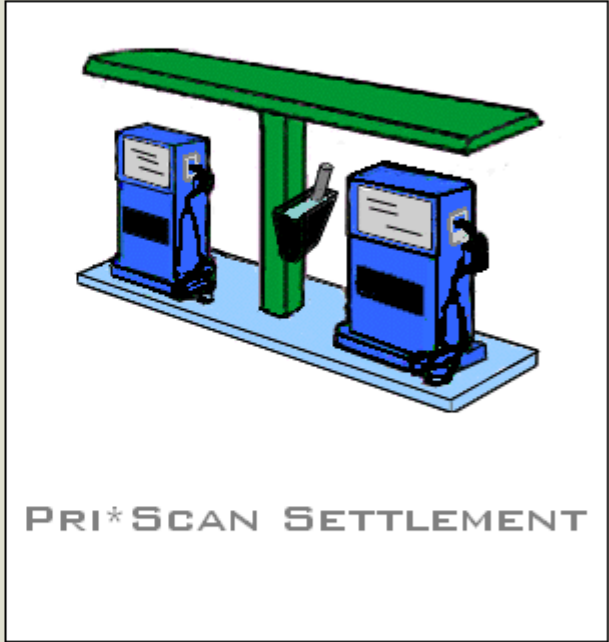
PRI*SCAN

DAILY SETTLEMENT MODULE

**Concerned with Cash Drawer Inconsistencies,
Daily Breakdown of Tenders, Local Credit? Or do
you just want a historical record of End-of-Day
information? The Settlement Module is for you!!**

Daily Settlement

Use the Settlement Module to balance the actual cash drawer with what the register says should be there.



Period Selector

Available Periods

Site Number

Summary Date

Site	Summary Date	Opened Period	Closed Period	Exported?
001	03/08/2006	03/08/2006 23:03:38	03/09/2006 23:13:22	Yes
001	03/07/2006	03/07/2006 23:03:40	03/08/2006 23:03:37	No
001	03/06/2006	03/06/2006 23:01:40	03/07/2006 23:03:39	No
001	03/05/2006	03/05/2006 23:07:11	03/06/2006 23:01:39	No
001	03/04/2006	03/04/2006 23:11:28	03/05/2006 23:07:10	No
001	03/04/2006	03/04/2006 04:59:20	03/04/2006 23:11:27	No
001	03/02/2006	03/02/2006 23:17:50	03/04/2006 04:59:19	No
001	03/01/2006	03/01/2006 23:16:19	03/02/2006 23:17:49	No
001	02/28/2006	02/28/2006 23:07:53	03/01/2006 23:16:18	No
001	02/27/2006	02/27/2006 23:11:55	02/28/2006 23:07:52	No
001	02/26/2006	02/26/2006 23:05:09	02/27/2006 23:11:54	No
001	02/25/2006	02/25/2006 23:12:37	02/26/2006 23:05:08	No
001	02/24/2006	02/24/2006 23:14:02	02/25/2006 23:12:36	No
001	02/23/2006	02/23/2006 23:15:25	02/24/2006 23:14:01	No
001	02/22/2006	02/22/2006 23:18:44	02/23/2006 23:15:24	No
001	02/21/2006	02/21/2006 23:08:12	02/22/2006 23:18:43	No
001	02/20/2006	02/20/2006 23:12:19	02/21/2006 23:08:11	No
001	02/19/2006	02/19/2006 23:45:26	02/20/2006 23:12:18	No
001	02/18/2006	02/18/2006 23:29:32	02/19/2006 23:45:25	No

Choose to view a single date or a date range.

Select

Close

Settlement [X]

File Settlement Accounting

Settlement Period: 03/04/2006 23:11:28 - 03/05/2006 23:07:10

Reference: Equal To Amount:

[GL Acct Maint.](#) [View Details](#)

Section/Reference	Total Count	Total Dollars	OS	D/C
Fuel Sales				
UNLEADED	2,798.852	6,714.62	1	C
UNLEAD PLUS	129.280	319.20	1	C
PREMIUM	70.316	178.52	1	C
DIESEL	64.185	166.82	1	C
Fuel Sales Total		7,379.16		
Non-Fuel Sales				
Auto	8.000	17.72	1	C
Bait	0.000	0.00	1	C
Bakery Goods	49.000	44.91	1	C
Beer	0.000	0.00	1	C
Candy	190.000	191.99	1	C
Chips	51.000	87.50	1	C
Cigarettes	361.000	2,091.80	1	C
Coffee	86.000	84.64	1	C
Dairy	100.000	283.30	1	C
Deli	57.000	120.44	1	C
Fountain	40.000	51.70	1	C
Frozen	15.000	52.95	1	C

Accounting Totals

Total Debits

Total Credits

Unbalanced Amt.

Settlement Totals

Total To Account For (1)

Total Accounted For (2)

Over/-Short (2-1):

[Note](#)

Line item details are available by section.

Fuel Sales, Department Sales, Sales Tax Collected, as well as all Tenders (Cash, Check, Credit, etc...), Paid Ins, Paid Outs, Voids and No Sales

Quick Change

Settlement Period: 03/04/2006 23:11:28 - 03/05/2006 23:07:10

Reference: cash Amount: 5481.18 [GL Acct Maint.](#) [View Details](#)

Section/Reference	Total Count	Total Dollars	OS	D/C
Discounts				
Discounts	6.000	0.00	1	C
Fuel Discounts	6.000	-7.79	1	C
Discounts Total		-7.79		
Tenders				
cash		5,481.18	2	D
Check		882.08	2	D
Credit		2,862.01	2	D
Debit		0.00	2	D
CRIND Credit		3,118.47	2	D
CRIND Debit		0.00	2	D
Imprint		0.00	2	D
Local Credit		0.00	2	D
Lottery Winner		185.00	2	D
Cig Coupon		13.00	2	D
Manufacturer Coupon		5.79	2	D
Store Coupon	14.000	13.31	2	D
Tenders Total		12,560.84		

Settlement Adjustment

Adjustment

Reference: cash

Current Value: Equal To \$5,481.18

New Value:
Equal To
Decrease By
Equal To
Increase By

[Save](#) [Cancel](#)

Accounting Totals

Total Debits: 12,568.63

Total Credits: 12,568.63

Unbalanced Amt.: 0.00

Settlement Totals

Total To Account For (1): 12,560.84

Total Accounted For (2): 12,560.84

Over/-Short (2-1): 0.00

[Note](#)

Choose a specific line item to edit the details. Quick Change the dollar amount or increase or decrease by a specific amount.

Export to either QuickBooks or MAS 90!!

Accounting Totals display the balance of Debits and Credits.

Settlement Totals display the over/short amount between the To Account For and Accounted For totals.

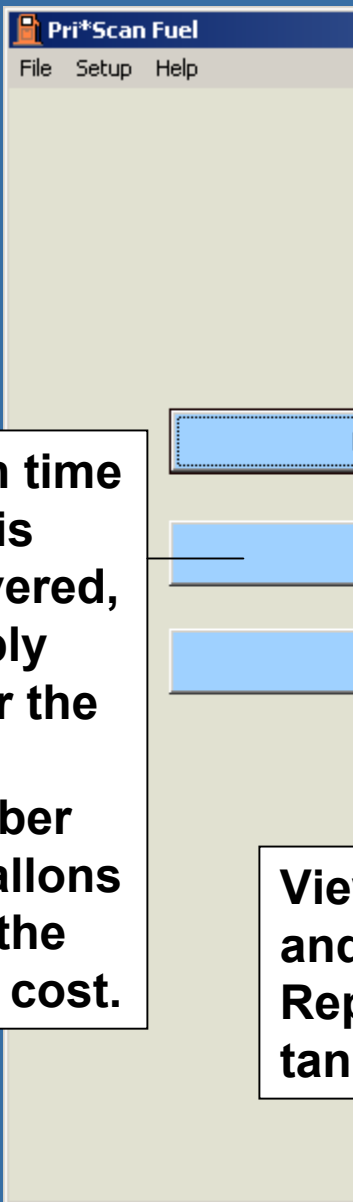
PRI*SCAN

FUEL INVENTORY MODULE

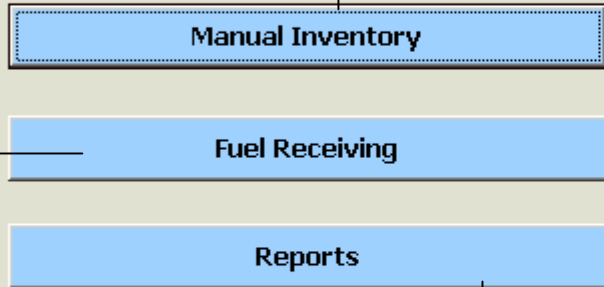
Profits on fuel sales are at an all time low. Use the Fuel Inventory module to accurately track margins to maximize your profits!!!

Key Functionality:

- Accurately track Fuel Margins!
- Monitor Tank Inventories for overage/shortage!
- Track daily tank variances for EPA reporting!

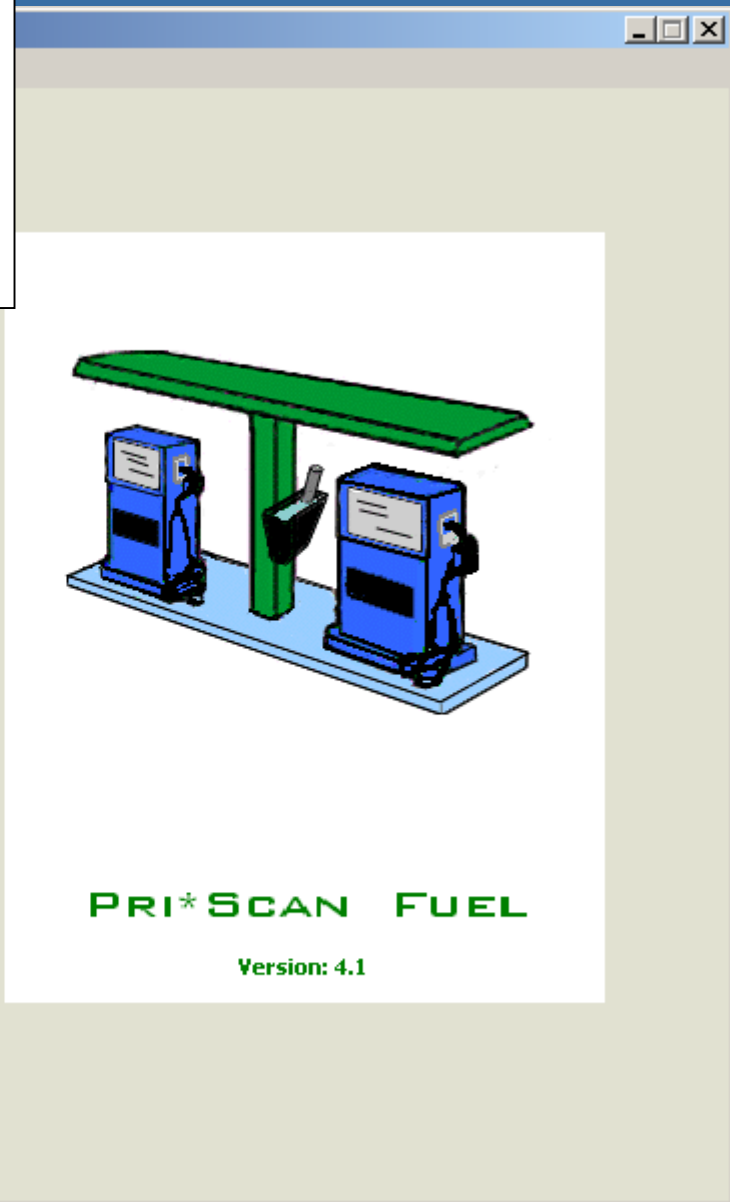


Easily enter the daily tank levels from either a Stick Reading or a Tank Monitoring System!



Each time fuel is delivered, simply enter the total number of gallons and the total cost.

View Margins, Shrink, and up-to-date EPA Reporting by date and tank



Enter Manual Inventories daily on a per tank basis to maintain accurate reporting. Record the date, gallons, manual inches and water inches if applicable.

Manual Inventory

Options

Fuel Tank

Site Number: 001

Tank Number: 1 - UNLEADED

Manual Inventory Entries [19]

Retail Grade	Inventory Date	Manual Volume	Manual Inches	Water Inches	Modified	By
UNLEADED	03/10/2005	8,602.000	65.625	0.000	03/11/2005 02:45:48 PM	123
UNLEADED	03/09/2005	14,144.000	43.500	0.000	03/11/2005 02:44:44 PM	123
UNLEADED	03/08/2005	10,996.000	80.875	0.000	03/11/2005 02:43:02 PM	123
UNLEADED	03/07/2005	9,448.000	70.875	0.000	03/08/2005 11:15:56 AM	123
UNLEADED	03/06/2005	7,709.000	60.375	0.000	03/07/2005 09:21:41 AM	123
UNLEADED	03/05/2005	8,862.000	66.250	0.000	03/11/2005 02:39:32 PM	123
UNLEADED	03/04/2005	13,908.000	101.875	0.000	03/11/2005 02:38:17 PM	123
UNLEADED	03/03/2005	9,989.000	74.250	0.000	03/04/2005 05:57:11 AM	123
UNLEADED	03/02/2005	9,336.000	70.250	0.000	03/11/2005 03:18:14 PM	123
UNLEADED	03/01/2005	8,921.000	67.250	0.000	03/11/2005 02:18:55 PM	123
UNLEADED	02/28/2005	6,436.000	52.750	0.000	03/01/2005 10:44:17 AM	123
UNLEADED	02/27/2005	3,136.000	31.250	0.000	03/11/2005 02:15:20 PM	123

Inventory Date: 03/07/2005

Volume: 9448.000 [Gallons]

Manual Inches: 70.875

Water Inches: 0.000

Save Cancel

Fuel Receiving

Options

Fuel Tank

Site Number: 001

Tank Number: 1

Grade: UNLEADED

Fuel deliveries are entered for each tank. Record invoice details including total gallons delivered and total cost (or per gallon cost).

Delivery Details (Current)

Vendor: SPARKS

Invoice Number: 2212005

Delivery Date: 03/09/2005

Volume Delivered: 9001.000 [Gallons]

Unit Wholesale: 1.979 [Gallons]

Total Wholesale: 17812.98

Delivery Details (New)

Vendor: SPARKS

Invoice Number: 2212005

Delivery Date: 03/09/2005

Volume Delivered: 9001.000 [Gallons]

Unit Wholesale: 1.979 [Gallons]

Total Wholesale: 17812.98

If modifications need to be made to the Delivery Details, the Current Details are displayed for reference.

Save Close

Pri*Scan Fuel

Options

Report Selection

Fuel Sales
 Tank Inventory
 Tank History
 Tank Variance

Tank EPA Grid
 Tank Receiving

Selection Criteria

Site Number: 001
 Reporting Date: Equal To

Sales By Grade
 Sales By Pump

Valuation Method: WAVG - Weighted Average

View

Tank Inventory: reports daily inventory levels for each tank!

Tank Receiving: Totals on deliveries per tank

Tank Variance: Compare actual level to perpetual level per tank

Tank EPA Grid: Track daily variances per tank

Fuel Sales: Sales by Grade (with Margin Reporting) or by Pump

Tank History: Choose any date range to display all inventory, receiving and variance details.

Reporting selection made easy with all options available on one screen!!

Pri*Scan Report Viewer

Report

92% 1 / 1

Fuel Sales by Grade

03/10/2005

Site: 001

Grade	Volume Sales	Dollar Sales	Wholesale	Profit	Margin %	Cents/Gal Profit
DIE SEL	198.725	\$436.99	\$399.95	\$37.04	8.48	\$0.19
PLUS	731.976	\$1,567.58	\$1,490.48	\$77.10	4.92	\$0.11
SUPR	600.548	\$1,372.30	\$1,270.70	\$101.60	7.40	\$0.17
UNLE AD	5,177.934	\$10,711.45	\$10,131.15	\$580.30	5.42	\$0.11
Grand Totals	6,709.183	\$14,088.32	\$13,292.28	\$796.04	5.65	\$0.12

Date Range: 03/10/2005, Site: 001, Valuation Method: WAVG

Accurately track fuel margins for each grade sold at the pump!!! This may be viewed for a single day or a date range!!

Pri*Scan Report Viewer

Report

92% 1 / 1

Tank Inventory Summary

03/10/2005

Site: 001

Tank	Volume	Value	Average \$/G
1 - UNLEADED	8,601.999	\$16,831.93	\$1.957
2 - PREMIUM	3,317.002	\$7,018.72	\$2.116
3 - DIESEL	3,060.011	\$6,158.41	\$2.013

Date Range: 03/10/2005, Site: 001, Valuation Method: WAVG

Tank Inventory reporting displays each tank with total gallons and dollar value for the date selected!!

Pri*Scan Report Viewer

Report

92%

1 / 1

Tank History

03/01/2005 - 03/10/2005

Site: 001
Tank: 1 - UNLEADED

Date	Description	Volume	Running Total
			Beginning Volume
			6,436.000
03/01/2005	Recv: SPARKS - 2212005	8,000.000	14,436.000
03/01/2005	Sold	-5,513.378	8,922.622
03/01/2005	Variance Adjustment	-1.622	8,921.000
03/02/2005	Recv: SPARKS - 2212005	6,280.000	15,201.000
03/02/2005	Sold	-5,867.960	9,333.040
03/02/2005	Variance Adjustment	2.960	9,336.000
03/03/2005	Recv: SPARKS - 2212005	6,366.000	15,702.000
03/03/2005	Sold	-5,712.474	9,989.526
03/03/2005	Variance Adjustment	-0.526	9,989.000
03/04/2005	Recv: SPARKS - 2212005	9,000.000	18,989.000
03/04/2005	Sold	-5,080.468	13,908.532
03/04/2005	Variance Adjustment	-0.532	13,908.000
03/05/2005	Sold	-5,041.474	8,866.526
03/05/2005	Variance Adjustment	-4.526	8,862.000
03/06/2005	Recv: SPARKS - 2212005	4,325.000	13,187.000
03/07/2005	Sold	-5,186.366	9,445.634
03/07/2005	Variance Adjustment	2.366	9,448.000
03/08/2005	Recv: SPARKS - 2212005	7,000.000	16,448.000
03/08/2005	Sold	-5,448.350	10,999.650
03/08/2005	Variance Adjustment	-3.650	10,996.000
03/09/2005	Recv: SPARKS - 2212005	9,001.000	19,997.000
03/09/2005	Sold	-5,849.794	14,147.206
03/09/2005	Variance Adjustment	-3.206	14,144.000
03/10/2005	Sold	-5,543.922	8,600.078
03/10/2005	Variance Adjustment	1.022	8,602.000
			Ending Volume
			8,602.000

Date Range: 03/01/2005 - 03/10/2005, Site: 001

View Tank History to review all entries pertaining to a tank on one screen.

Also, if you suspect a volume variance is due to a mistake with a manual entry, you would see that here.

Pri*Scan Report Viewer

Report

92% 1 / 1

Tank Variance

03/01/2005

Site: 001

Tank	Tank Volume	Manual Volume	Variance	Variance %
1 - UNLEADED	8,922.622	8,921.000	-1.622	-0.02
2 - PREMIUM	4,020.082	4,031.000	10.918	0.27
3 - DIESEL	3,364.418	3,363.000	-1.418	-0.04

Date: 03/01/2005, Site: 001

Easily compare the gallons that should be in a tank (Tank Volume) with the actual gallons (Manual Volume) to track variances per tank by gallons and percentage!

Pri*Scan Report Viewer

Report

75% 1 / 1

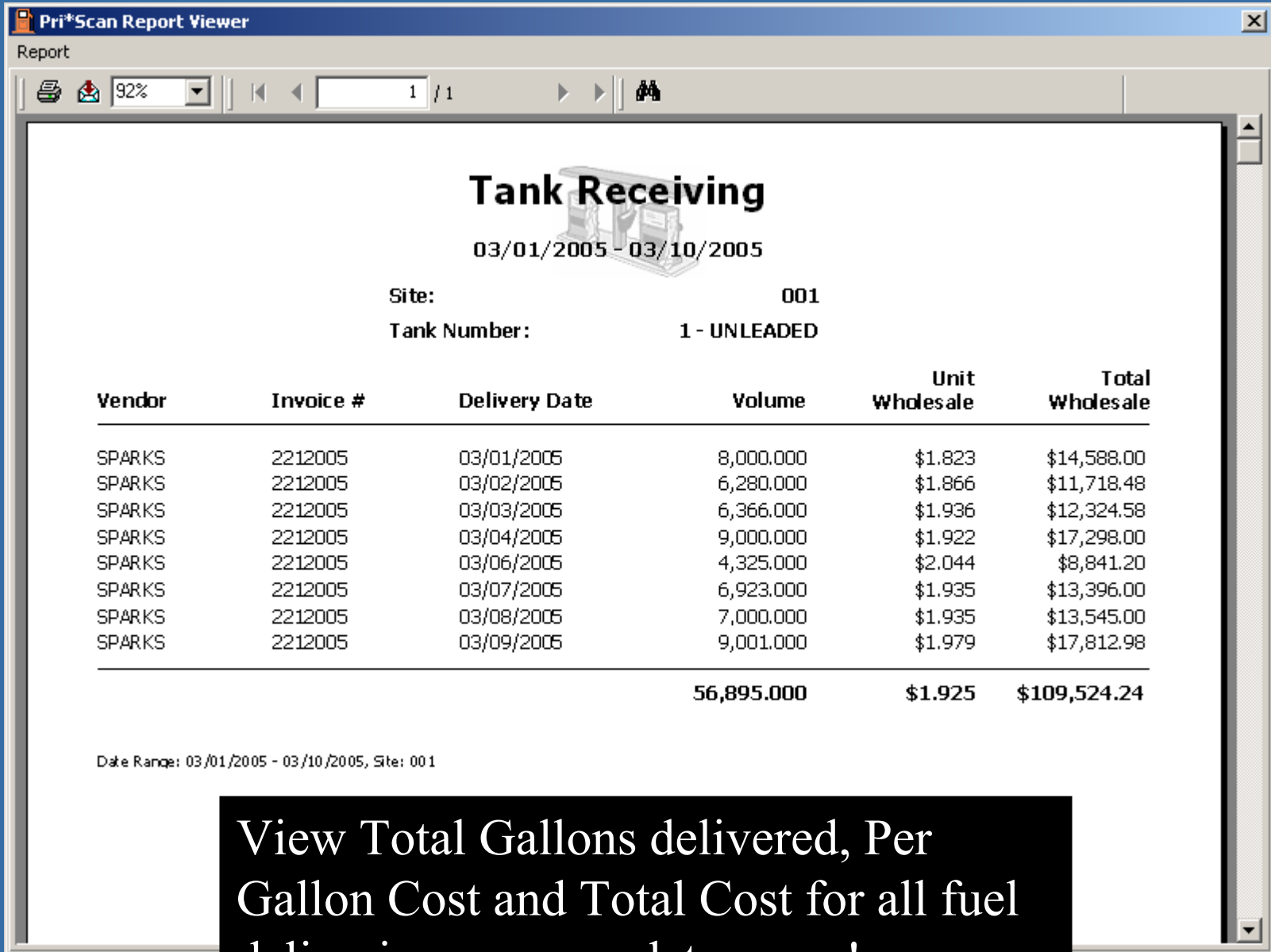
EPA Tank History

03/01/2005 - 03/10/2005

Site: 001
Tank: 1 - UNLEADED

Date	Prior Volume	Volume Received	Volume Sold	Volume Balance	Manual Inches	Manual Volume	Volume Variance	Water
3/1/2005	6,436.000	8,000.000	5,513.378	8,922.622	67.250	8,921.000	-1.622	0.000
3/2/2005	8,921.000	6,280.000	5,867.960	9,333.040	70.250	9,336.000	2.960	0.000
3/3/2005	9,336.000	6,366.000	5,712.474	9,989.526	74.250	9,989.000	-0.526	0.000
3/4/2005	9,989.000	9,000.000	5,080.468	13,908.532	101.875	13,908.000	-0.532	0.000
3/5/2005	13,908.000	0.000	5,041.474	8,866.526	66.250	8,862.000	-4.526	0.000
3/6/2005	8,862.000	4,325.000	5,476.296	7,710.704	60.375	7,709.000	-1.704	0.000
3/7/2005	7,709.000	6,923.000	5,186.366	9,445.634	70.875	9,448.000	2.366	0.000
3/8/2005	9,448.000	7,000.000	5,448.350	10,999.650	80.875	10,996.000	-3.650	0.000
3/9/2005	10,996.000	9,001.000	5,849.794	14,147.206	43.500	14,144.000	-3.206	0.000
3/10/2005	14,144.000	0.000	5,543.922	8,600.078	65.625	8,602.000	1.922	0.000
TOTALS		56,895.000	54,720.482	TOTAL GALLONS OVER OR SHORT			-8.518	

Track daily variances (overage/shortage) for each tank for a day, a week, a month, or whatever date range you desire!



Tank Receiving

03/01/2005 - 03/10/2005

Site: 001

Tank Number: 1 - UNLEADED

Vendor	Invoice #	Delivery Date	Volume	Unit Wholesale	Total Wholesale
SPARKS	2212005	03/01/2005	8,000.000	\$1.823	\$14,588.00
SPARKS	2212005	03/02/2005	6,280.000	\$1.866	\$11,718.48
SPARKS	2212005	03/03/2005	6,366.000	\$1.936	\$12,324.58
SPARKS	2212005	03/04/2005	9,000.000	\$1.922	\$17,298.00
SPARKS	2212005	03/06/2005	4,325.000	\$2.044	\$8,841.20
SPARKS	2212005	03/07/2005	6,923.000	\$1.935	\$13,396.00
SPARKS	2212005	03/08/2005	7,000.000	\$1.935	\$13,545.00
SPARKS	2212005	03/09/2005	9,001.000	\$1.979	\$17,812.98
			56,895.000	\$1.925	\$109,524.24

Date Range: 03/01/2005 - 03/10/2005, Site: 001

View Total Gallons delivered, Per Gallon Cost and Total Cost for all fuel deliveries over any date range!

PRI*SCAN SOFTWARE PREVIEW

**You have come to the end of the
software preview. Thank you for your
interest!**

**To schedule a more in-depth
presentation, please contact us at
888.304.4870.**